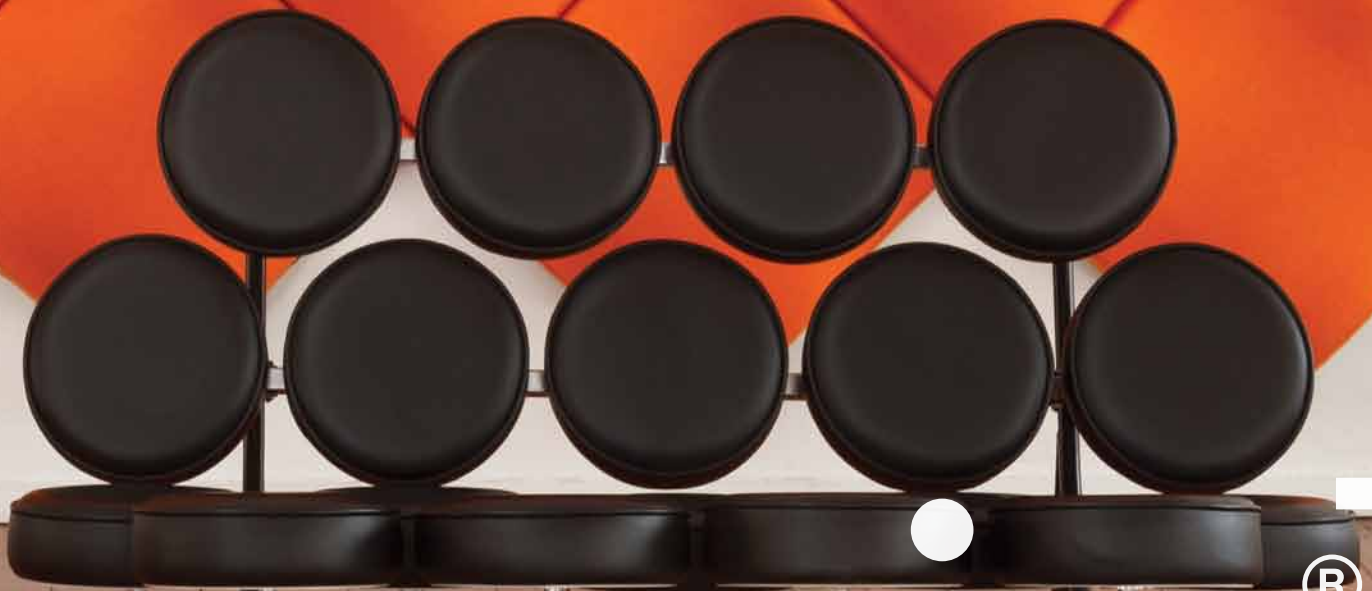


ecooustic® moov



wovvin®

# introduction

Ecooustic® Moov is an elegant wall and ceiling panelling tile designed to provide excellent broadband sound absorption in any interior space such as boardrooms, restaurants, theatres and auditoriums.

After extensive research and development, Ecooustic® Moov represents a highly effective, innovative engineered solution to acoustic challenges without sacrificing aesthetics.

Achieving an outstanding NRC (noise reduction coefficient) result of 0.9, the smooth hyperbolic curves of Ecooustic® Moov will transform any wall or ceiling into a functional and sensuous felt expanse.

The installation of Ecooustic® Moov can be customised through the use of colour and the formation of shapes created by multiple tiles. Ecooustic® Moov is available in a wide range of colourways, which can be installed in a single colour or in a mix of colour combinations.

Quick and simple to install, the rear-mounting sound chamber tile can be fixed to most surfaces by simply screwing or fixing to the wall, while the Ecooustic® Tile easily self-fastens in place onto the sound chamber tile.



**Project:** Living Edge  
**Location:** Sydney, Australia  
**Material:** Ecooustic® Felt Jet, Charcoal, Light Grey

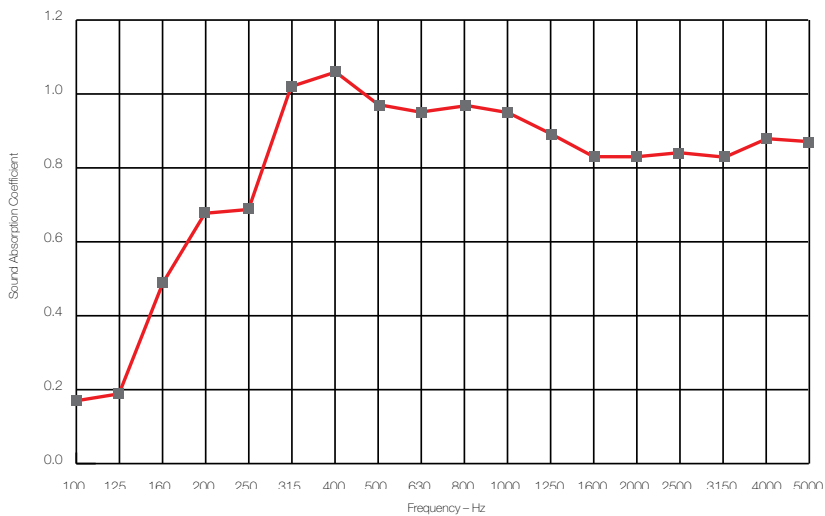


**Project:** Ministry of Sound  
**Location:** Sydney, Australia  
**Material:** Instyle Sense fabric

# acoustic information

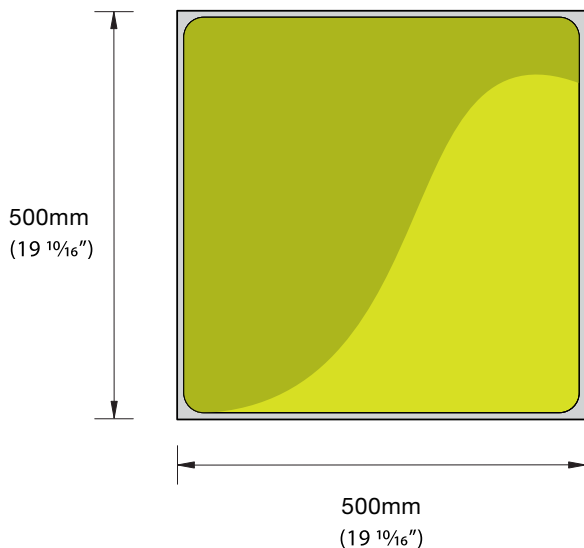
Ecooustic® Moov provides a design solution that significantly reduces unwanted noise. Ecooustic® Moov achieves an impressive NRC result of 0.9, with consistent performance in the medium to high frequencies. Ecooustic® Moov is ideal for use in a variety of interior spaces, including restaurants, offices, theatres, auditoriums and public buildings, where the control of sound is essential.

NRC	0.90
Weighted Sound Absorption Coefficient $\alpha_w$	0.95
Maximum Sound Absorption	Class A

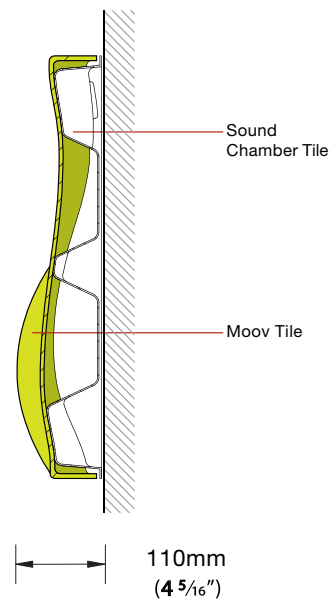


## ecooustic® moov tile

Front View



Side View





# ecooustic® felt finishes



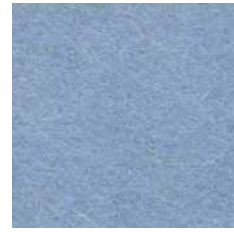
White



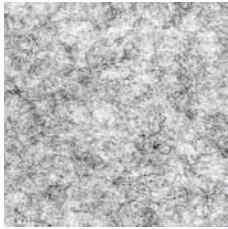
Yellow



Natural



Sky



Light Grey



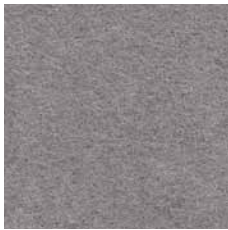
Lime



Orange



Cobalt



Pewter



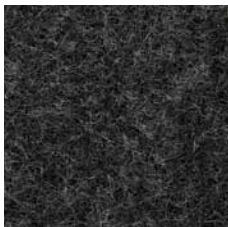
Green



Red



Jet



Charcoal



Caper



Taupe

## edging profiles

Ecooustic® Moov can be installed without edging or with edging made from aluminium with a natural anodised finish. Both straight and curved edging profiles are available.



Straight Profile



Curved Profile



No Profile

**Wovin Wall Head Office**

Wovin Wall Pty Ltd  
6-8 Ricketty Street  
Mascot NSW 2020  
Australia  
T. +61 2 9317 0222  
E. esales@wovinwall.com

**Australia**

Instyle Contract Textiles Pty Ltd  
6-8 Ricketty Street  
Mascot NSW 2020  
Australia  
T. +61 2 9317 0222  
E. esales@instyle.com.au

**Europe**

Bayform  
Landrovej 5  
5800 Nyborg  
Denmark  
T. +45 3213 6080  
E. cb@bayform.dk

**France**

Plus and More - Material Solutions  
6 Place Andre Rivoire  
38200 Vienne  
France  
T. +33 4 74 56 72 31  
F. +33 9 59 98 37 21  
E. info@plusandmore.fr  
W. www.plusandmore.fr

**Germany**

Concept & Partner  
Complexma Material Solutions  
Santrigelstrasse 2  
D - 81829 München  
Germany  
T. +49 89 316 58 30  
F. +49 89 311 98 127  
E. info@complexma.com  
W. www.complexma.com

**Greece**

Kalotaranis s.a.  
15th km Drama \* Kavala  
66300 Ag Athanasios Greece  
T. +30 2521069560  
F. +30 2521069563  
E. info@kalotaranis.gr

**Hong Kong**

Greenery HK Ltd  
Room 1306, 13/F, Tai Tung Building  
8 Fleming Rd, Wanchai  
Hong Kong  
T. +852 3161 5288  
F. +852 3747 4949  
M. +852 9365 8894  
E. info@greeneryhk.com  
W. www.greeneryhk.com

**Lebanon and Kuwait**

Luxe Design s.a.r.l  
Jounieh – Beirut highway,  
P.O.Box: 684 Jounieh  
Lebanon, Lebanon  
T. +961 9638009 / +961 3978243  
Kuwait  
T. +965 66449560 / +965 97346537  
E. sandrak@luxedesignco.com

**Malaysia**

Infinity Pte Ltd.  
33 Niven Rd  
Singapore 228380  
T. +65 6738 4482  
F. +65 6337 1389  
E. admin@infinitysin.com

**Middle East**

Trans Seas  
Prism Tower, Business Bay,  
17th Floor, Suite 1709,  
P.O. Box 211622,  
Dubai, UAE  
T. +971 4 423 2080  
F. +971 4 423 2081  
E. info@transseas.com  
W. www.transseas.com

**New Zealand**

Vivid Textiles Pty Ltd  
Suite 3, Level 3  
30 St Benedicts Street  
Newton, Auckland  
New Zealand  
T. +64 9302 8885  
E. esales@vividtextiles.co.nz

**Russia**

WonderWalls LLC  
Ochakovskaya B. str. 9  
119361 Moscow  
Russia  
T. +7 495 258 00 21  
E. info@wonderwalls.ru  
W. www.wonderwalls.ru

**Singapore**

Infinity Pte Ltd.  
33 Niven Rd  
Singapore 228380  
T. +65 6738 4482  
F. +65 6337 1389  
E. admin@infinitysin.com

**South Africa**

Ergosystem Walling Solutions (Pty) Ltd  
Unit 9, Northriding Commercial Park  
Northriding, Johannesburg  
South Africa  
T. +27 11 801 9560  
E. info@ergosystem.co.za

**South Korea**

Surface LAB Industry  
Riverhill 102/1301  
Sancheon-Dong 193  
Yongsan – Gu  
Seoul, Korea  
T. +82 (0)2 717 7377  
F. +82 (0)2 701 0975  
E. wovinwallkorea@gmail.com

**Taiwan**

Ming Gallant Inc.  
No. 99-8, Nangang Road Sec. 2,  
Nangang District, Taipei City 115,  
Taiwan R.O.C.  
T. +886 2 2785 0880  
F. +886 2 2785 1880  
E. mgi.sales@msa.hinet.net

**Thailand**

Room Limited  
9/6 Moo. 3, Chowfah Rd.  
T. Vichit, A. Muang,  
Phuket 83000  
Thailand  
M. +66 89 776 4200  
E. golf@room-limited.com  
W. www.room-limited.com

**Turkey**

kibrID design consultancy  
Ortaklar Caddesi Unsal Sokak Saruhan  
Apartment No: 1/1,  
34394 Mecidiyekoy  
Istanbul  
Turkiye  
T. +90 212 347 25 04 - 05  
F. +90 212 347 25 06  
E. info@kibrID.com  
W. www.kibrID.com

**USA + Canada**

Unika Vaev  
19 Ohio Avenue  
Norwich  
Connecticut 06360  
United States of America  
T. +1 800 237 1625  
F. +1 860 889 0331  
E. info@icfgroup.com  
W. www.unikavaev.com